

VYC Race Courses 2015

Course #	Route	Miles	Comments
11	Ap . F	1.6	Windward/leeward courses
12	Ap . Bp . Ap - F	3.2	
13	Ap . Bp . Ap . Bp . Ap . F	4.8	
21	Ap . 28p . F	2.0	2# courses when wind is coming from %A+mark toward buoy %28+
22	Ap . 26s . 28s . F	2.7	
23	Ap . Bp . 26s . 28s . F	3.1	
24	Ap . 26s . As . 30p . 28p . F	3.4	
25	Ap . Bp . 32p . 28p . F	3.6	
26	Ap . Bp . Ap . 30p . 28p . F	4.3	
31	Ap . 30p . F	2.3	3# courses when wind is coming from %A+mark toward buoy %30+
32	Ap . 28s . 30s . F	2.7	
33	Ap . Bp . 28s . 30s . F	3.0	
34	Ap . 32p -28s . 30s . F	3.8	
35	Ap . Bs . 32p . 28s . 30s . F	3.9	
36	Ap . 32p . As . 28s . 30s . F	5.1	
41	Ap . 32p . F	2.4	4# courses when wind is coming from %A+mark toward buoy %32+
42	Ap . 30s . 32s . F	2.7	
43	Ap . Bp . 30p -32s . F	2.8	
44	Ap . Bp . 28s . 32s . F	3.7	
45	Ap . 28s . 36p . 32p . F	3.9	
46	Ap . Bp . Ap . 28s . 32s . F	4.7	

All marks numbered 26 thru 34 are red channel buoys.

%A+Mark is the orange inflatable tetrahedron buoy approximately 0.8 nautical miles directly upwind from the start line. The approximate coordinates of the %A+Mark are 32°40'00" N and 117°09'00" W.

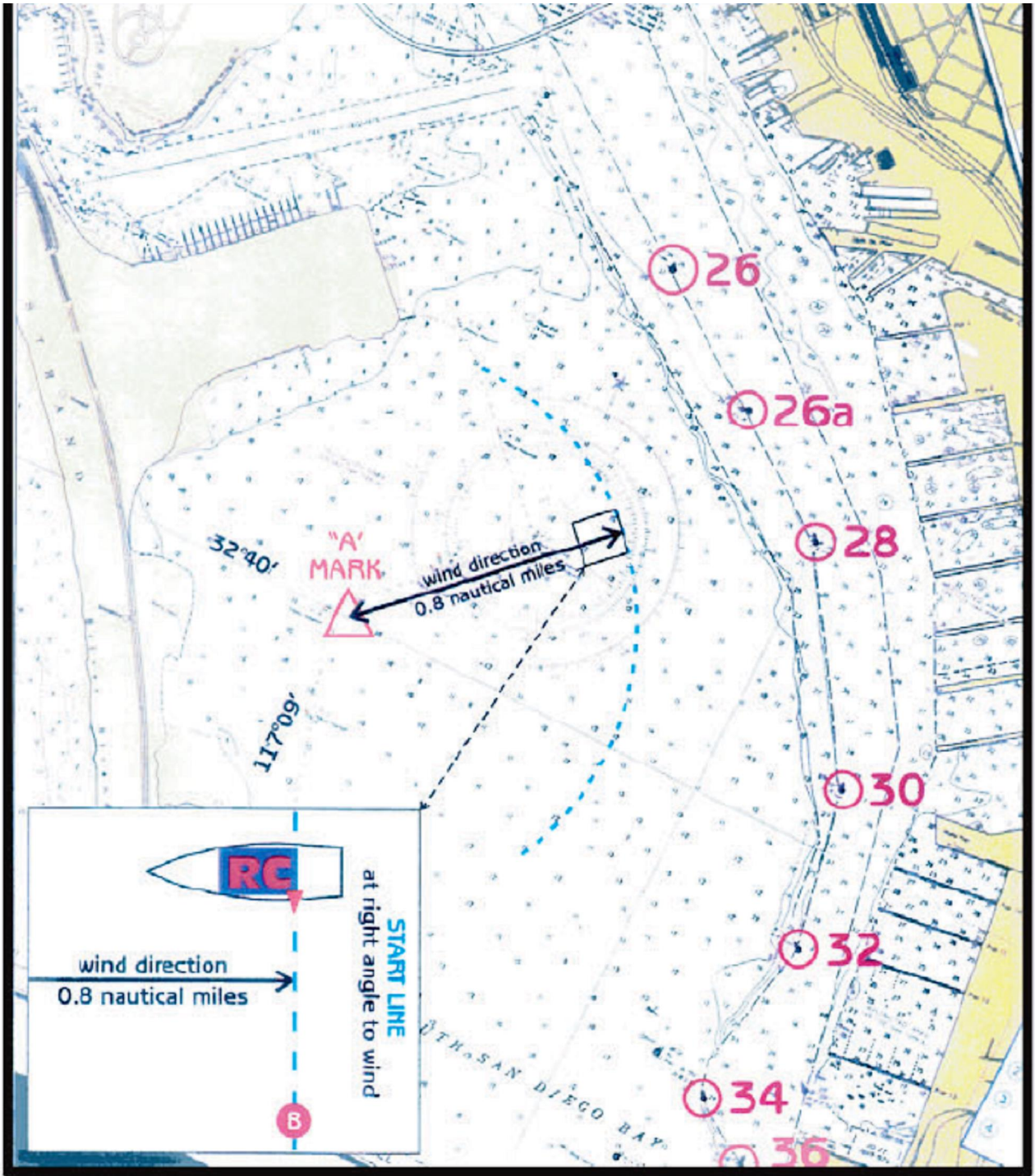
The %SStart Line+is on an arc approximately 0.8 nautical miles directly downwind from the %A+Mark.

%B+Mark or pin is the inflatable ball at the end of the start line opposite the orange flag on the committee boat.

Starting Sequence

Stage	Visual Signal	Sound Signal	Time to Start
Courtesy	none	5 short sounds	6 minutes
Warning	VYC Burgee Displayed	1 short sound	5 minutes
Preparatory	Black Flag Displayed	1 short sound	4 minutes
	Black Flag Removed	1 long sound	1 minute
Start	Class Flag Removed	1 short sound	0 minutes

SOUTH SAN DIEGO BAY CHART



Approximate Magnetic Bearings

- %A+to 26 5q
- %A+to 28 40q
- %A+to 30 70q
- %A+to 32 90q

Buoy Locations

- "A") 32.39.983 N 117.08.900 W
- 26) 32.40.997 N 117.08.659 W
- 28) 32.40.796 N 117.08.659 W
- 30) 32.40.140 N 117.07.664 W
- 32) 32.39.781 N 117.07.574 W